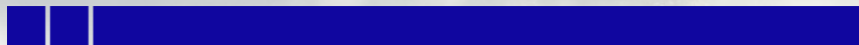


A misty forest landscape with a power line tower in the foreground. The scene is filled with tall evergreen and deciduous trees, with a thick layer of white mist or fog hanging in the air. A tall, dark metal power line tower stands prominently on the right side of the frame, with power lines stretching across the scene. The overall atmosphere is serene and somewhat ethereal.

# ELECTROMONTAJ

The Future is Electric



# About us

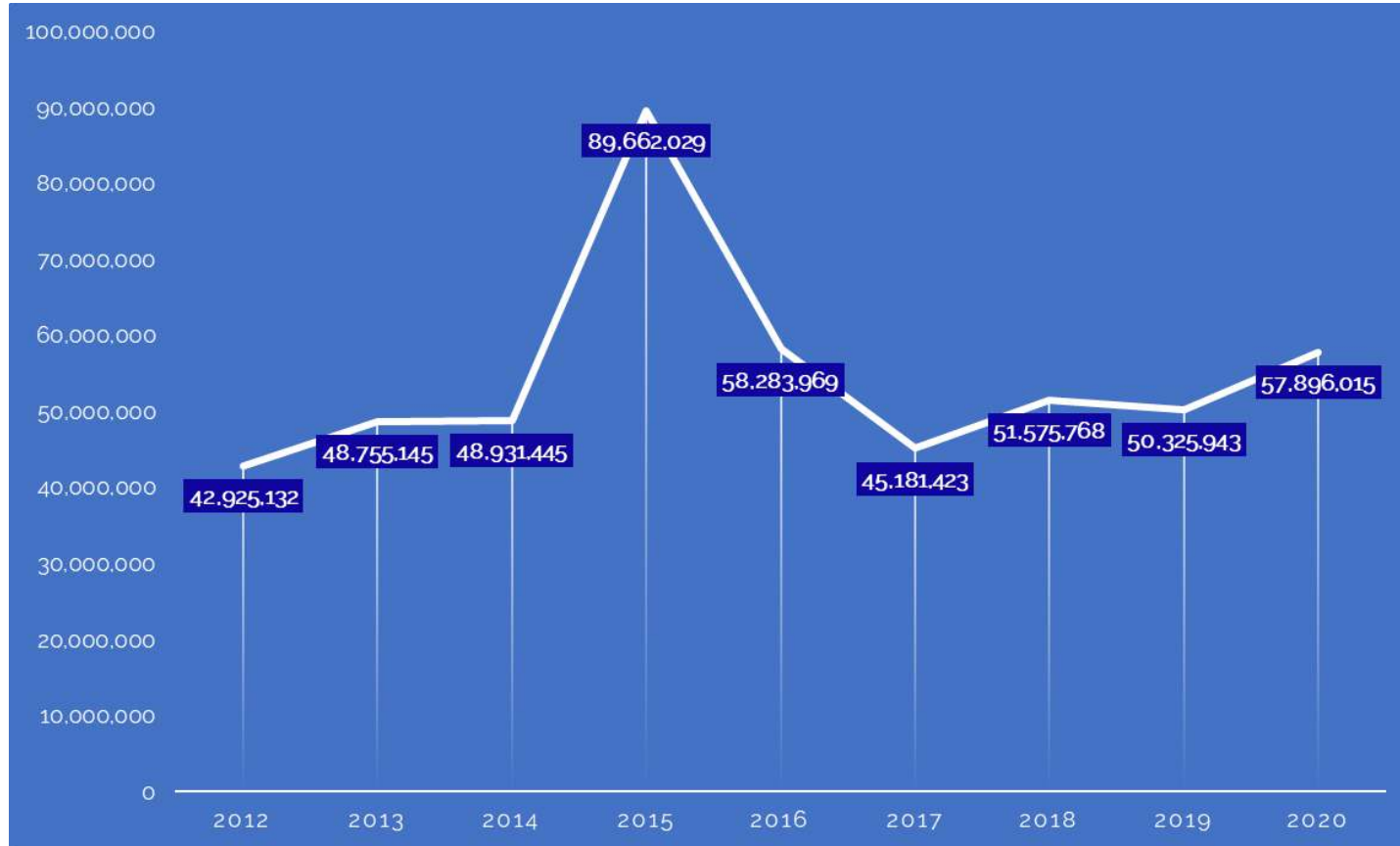
We are a world-class technology company, based in Romania, with projects all over the world. We support the global transition towards a sustainable future based on electrical energy through the design, construction, transformation and maintenance of the infrastructure for smart electricity distribution.

We have **over 70 years of experience** in the high-voltage distribution infrastructure **with over 400,000 kilometers of high-voltage and medium overhead lines built**. We are confident about the future thanks to our team of more than **1,500 engineers and professionals** who have proved that excellence is achievable. Therefore, the safety of our employees and contractors is an essential part of our strategy and of the way we operate.

We support the global transition towards a sustainable future based on electrical energy!



# Turnover evolution (EURO)



# 70+

years of  
projects

## 1.500

colleagues  
working  
on 3 continents

## 970

substations  
of  
120-400 kV

## 65.000

substations  
up to  
63 kV

## 400.000

km of high-voltage  
and medium  
transmission lines

These figures represent the ambition, determination and fighting spirit of the Electromontaj team.

Our people are the pride and strength with which we build a sustainable future.

We started out in 1949 with the mission to “electrify” Romania and today, more than 70 years afterwards, we have an even more audacious goal: **the world transition to a sustainable future based on electrical energy, because ... The future is electric!**



# Our Values



**People** - We believe in people, appreciate and respect every contribution, and discover opportunities in the different opinions.



**Efficiency through innovation** - We are constantly looking for new technologies, ways to progress and streamline our business, to deliver to the highest standards.



**Excellence in execution** - We have been improving since 1949. We are professionals with experience in the industry in which we operate and we have the ambition to go beyond limits.



**Care for life** - We support the global transition to a sustainable future, based on electricity, we stimulate economic growth and improve people's quality of life.



**Integrity** - We keep our promises! Integrity is fundamental to us. We can only build with mutual respect and trust.





# Electromontaj Group



Electromontaj – with branches in Romania and abroad.



Emfor Montaj – makes foundations, drilling and other civil works.



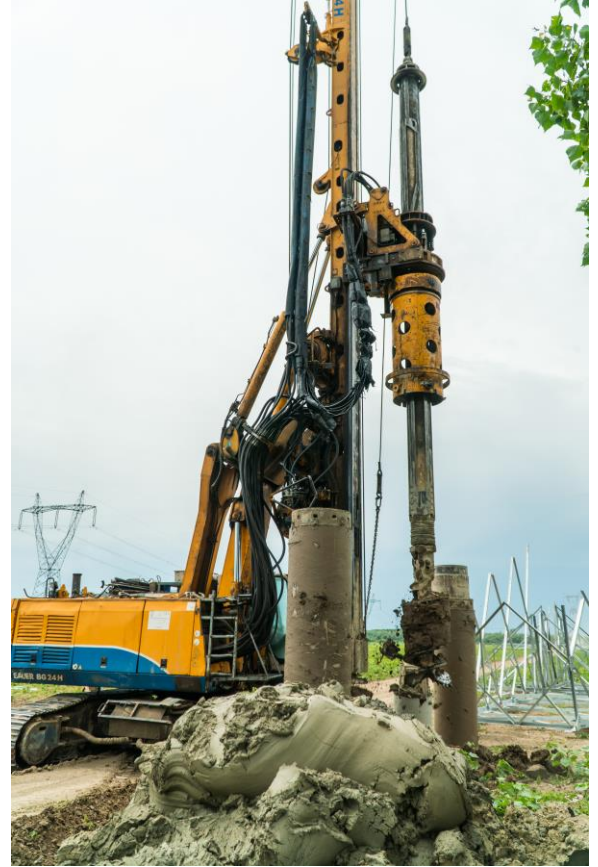
Iproeb – produces cables, conductors, composite insulators and other electrical equipments.



+70 years of projects

- 400 kV Overhead Power Lines
- 220 kV and 132 kV Overhead Power Lines
- 110 kV Underground Power Lines
- Substations

# Electromontaj people in action



# Electromontaj people in action



# Services

We have the capacity to carry out different projects, on different continents, all at the same time and at the highest quality standards:

- Design and construction of high-voltage electric power lines;
- Design and construction of power stations and substations;
- Design and manufacture of steel lattice towers, conductors and accessories;
- Testing of steel lattice towers with heights of up to 90 meters;
- Construction of buildings, classical and drilled foundation, horizontal directional drilling;
- Other services.



# Design and construction of high-voltage electric power lines



**Overhead power lines  
from 0.4 kV to 750 kV**



**Underground power lines  
from 0.4 kV to 400 kV**



**Emergency restoration of the overhead  
transmission lines with temporary towers,  
from 0.4 kV to 750 kV**

# Design and construction of power stations and substations



Power stations 750/400/20/110/20 kV and Substations  
20/10/6/0.4 kV



Civil and  
electrical works

# Design and manufacture of steel lattice towers, conductors and accessories



**Manufacture of galvanised bolted metal towers and metal structures**



**Manufacture of cables, conductors and insulators for medium and high-voltage lines**



**Manufacture of clamps and fittings for medium and high-voltage lines, welded metal structures**

# Testing of steel lattice towers with heights of up to 90 meters

The Tower Testing Station was built to perform design and physical tests on metal lattice towers.

There are no restrictions on the material used in the manufacture of the structure to be tested.

Vertical, longitudinal, transverse and wind loads are applied by electrical winches at a constant low speed. A maximum of 66 loads can be applied and measured simultaneously.

The Tower Testing Station can perform design tests for multi-circuit giant towers of up to 90 metres high, with a base of 35 x 35 metres, a compression load of 800 tons and a tensile load of 730 tons.

So far, Electromontaj has successfully tested more than 50 towers for overhead power lines with a nominal voltage of up to 500 kV in other testing stations, using testing procedures developed by Electromontaj.



# Construction of buildings, classical and drilled foundation, horizontal directional drilling

In the sector of complex engineering works, Emfor Montaj, company part of Electromontaj Group, performs the following types of works:

- Treatment and improvement of the ground for foundations constituted from compressible soils, from losses or from liquefiable granular residues by applying different technologies;
- Foundation lands consolidation of the natural versants and of the artificial banks by active and passive tension rods;
- Draining of the foundation lands, of the natural versants and of the artificial banks by bore-holes of different inclinations and properly equipped;
- Special foundations (mini pilots, pilots, columns achieved by drilling and filled up with concrete, with a combination of earth, lime and cement, sand and gravel);
- Inclined bores necessary for the pilots or anchors execution.



## Other services



**Design and construction of connections to SEN, constructions for wind farms and photovoltaic parks**



**CFR (Romania's state-owned railway passenger carrier) electrification works, public lighting, electrical installations for airports, trolleys, trams**



**Consultancy and attainment of permits and authorizations, drafting of solution and feasibility studies**

A wide-angle photograph of a power transmission line stretching across a lush green field. Several large, lattice-structured towers are visible, with three prominent ones in the foreground. The towers are painted in a reddish-brown color. The sky is filled with soft, white clouds, and the overall scene is bright and clear.

You can find more about us on:  
<https://electromontaj.ro>



Thank you!

**EM**

---